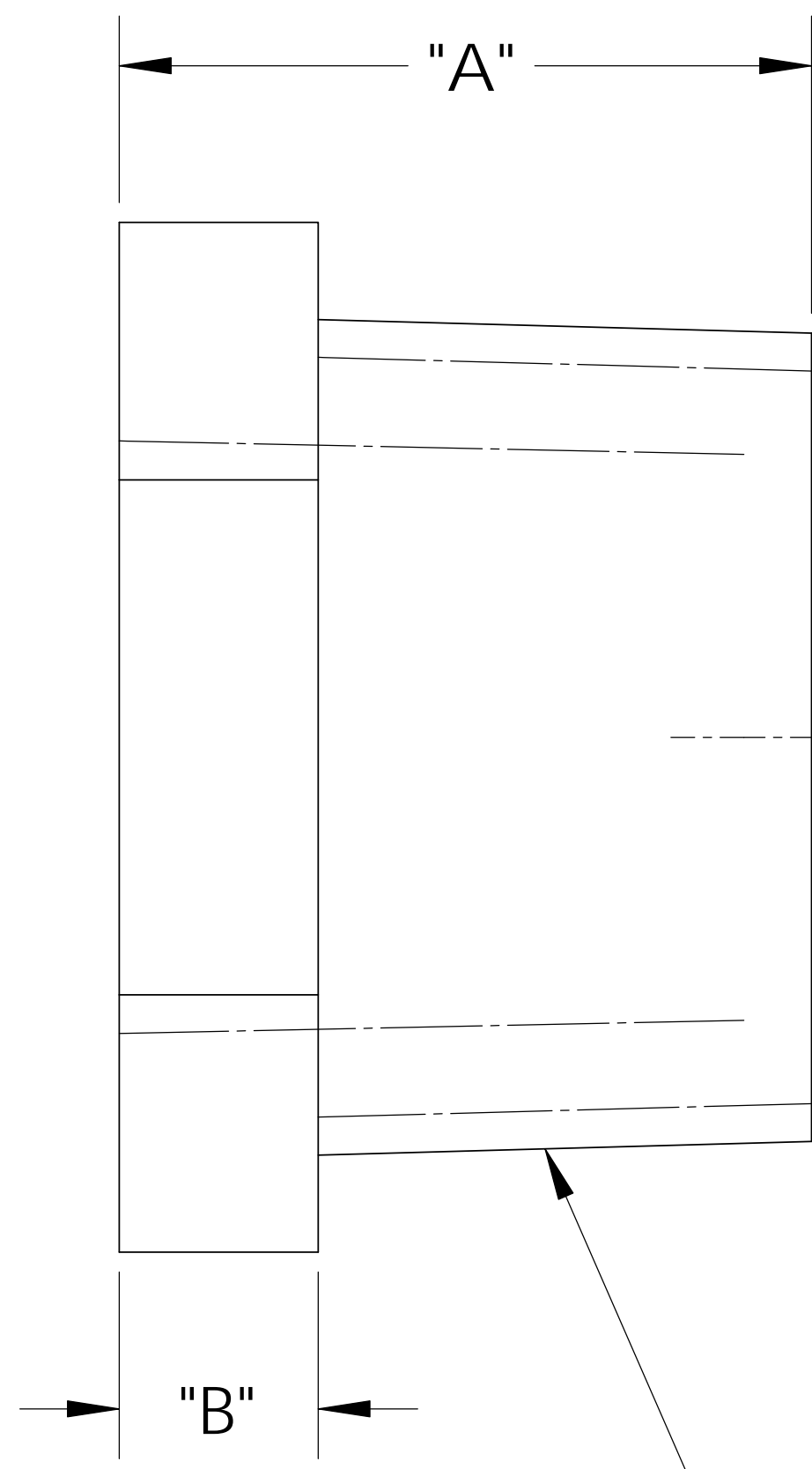
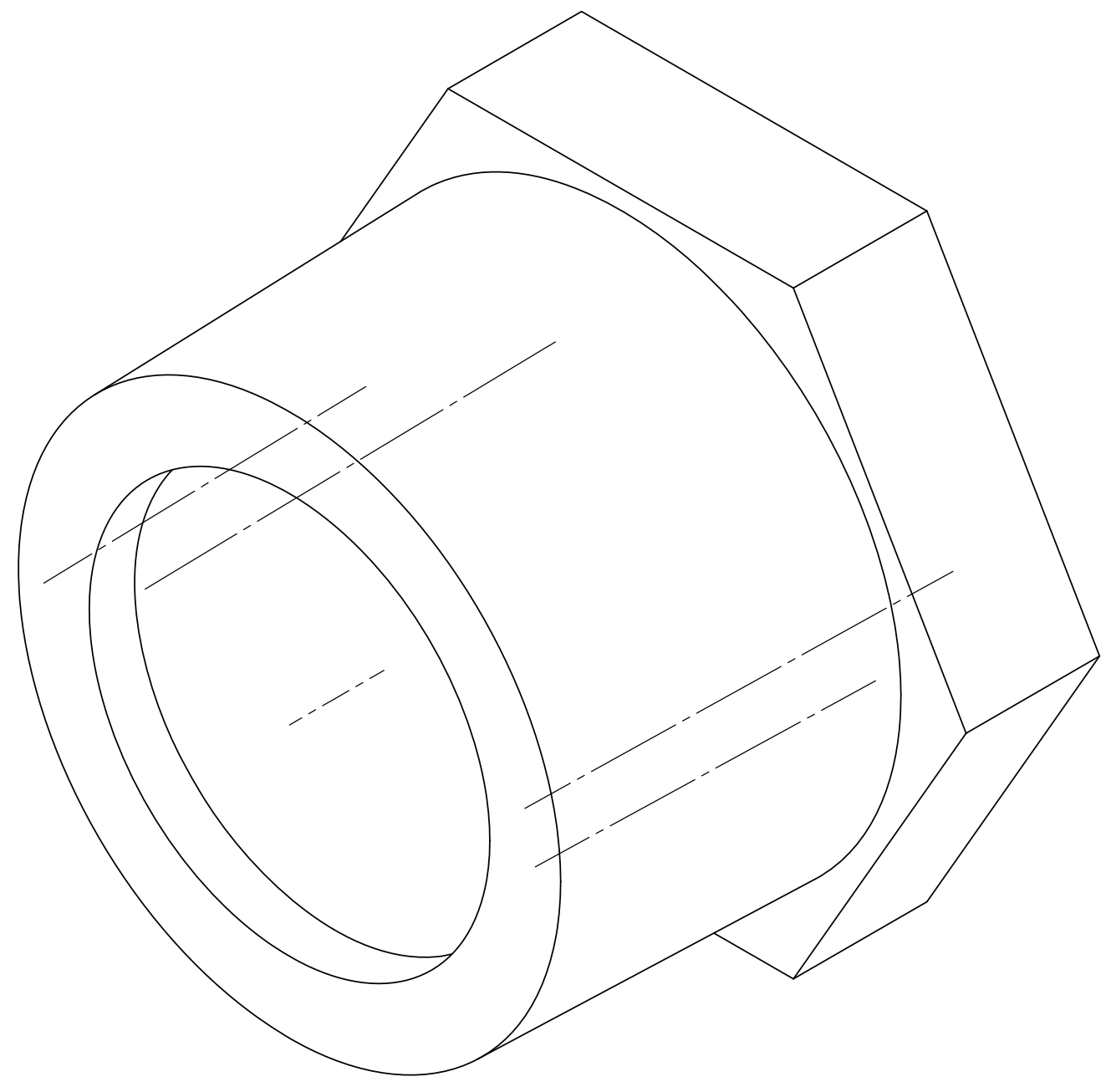
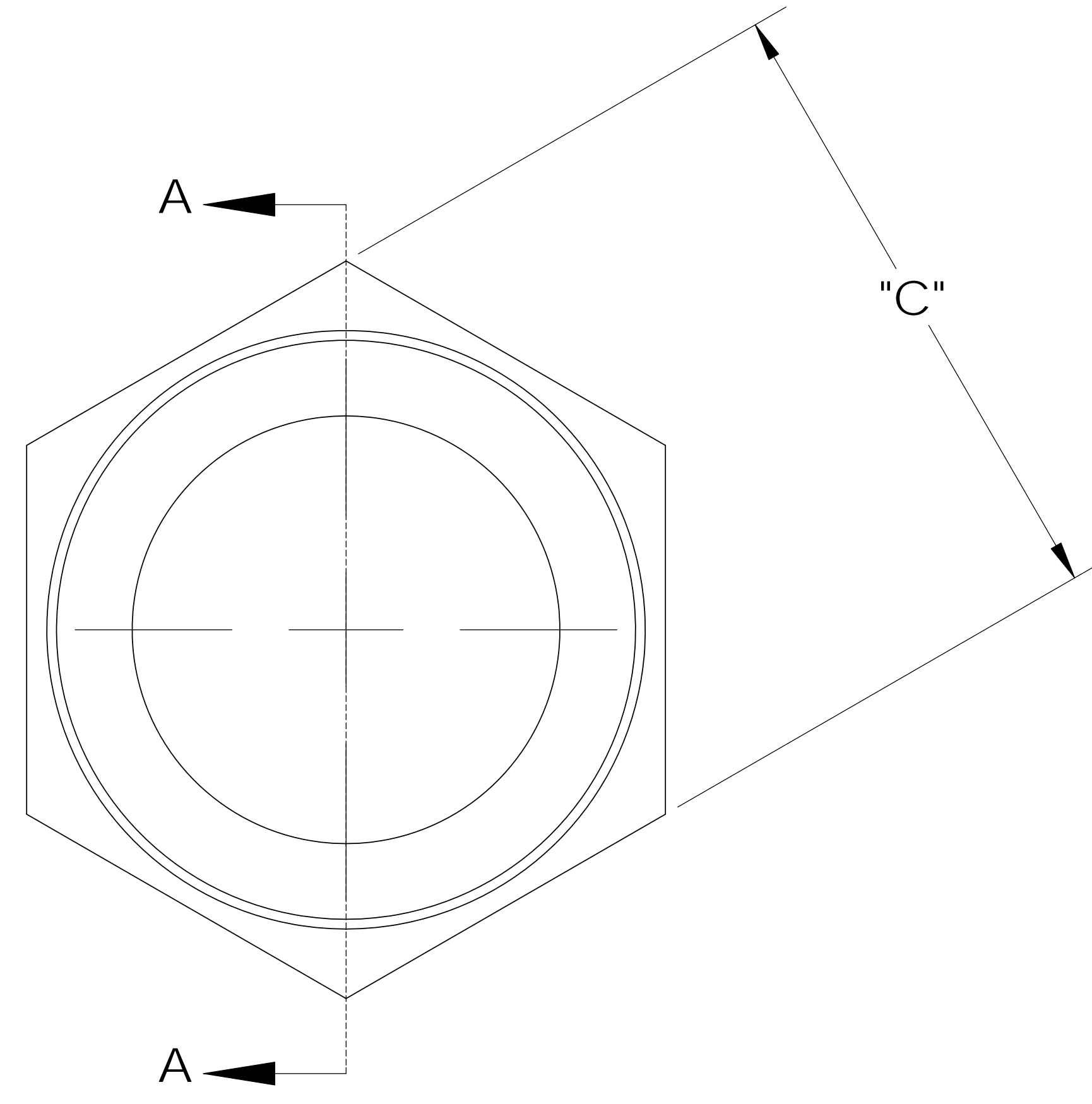


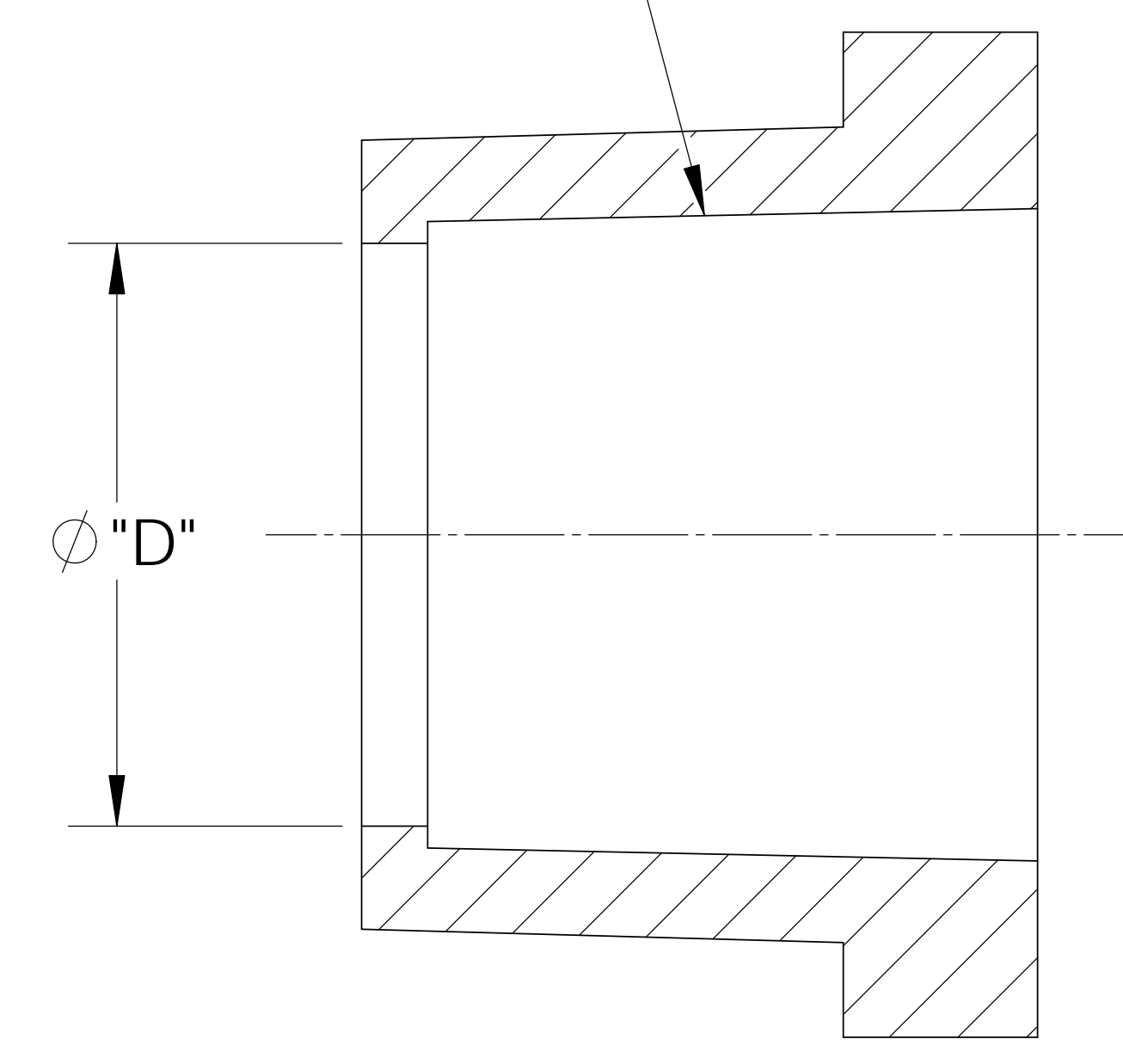
8 7 6 5 4 3 2 1



MALE 3/4"-14 NPT



FEMALE 1/2"-14 NPT



SECTION A-A

NOTES:
 1) POLYPROPYLENE HAS COLOR OPTIONS:
 BLACK = TRB3412/PPB
 NATURAL = TRB3412/PPN

PROPRIETARY AND CONFIDENTIAL
 THE INFORMATION CONTAINED IN THIS DRAWING IS THE SOLE PROPERTY OF THOGUS PRODUCTS COMPANY. ANY REPRODUCTION IN PART OR AS A WHOLE WITHOUT THE WRITTEN PERMISSION OF THOGUS PRODUCTS COMPANY IS PROHIBITED.

CATALOG NO.	DESCRIPTION	MATERIAL	DIM "A"	DIM "B"	DIM "C"	DIM "D"
TRB3412/PP	3/4" NPT X 1/2" NPT PP	POLYPROPYLENE	.860	.245	1.11	.740
TRB3412/N	3/4" NPT X 1/2" NPT N	NYLON	.870	.250	1.12	.750

REV	WRO#	DESCRIPTION	HISTORY
C	95.00156	CONVERTED TO 3D FORMAT	UNLESS OTHERWISE SPECIFIED: DIMENSIONS ARE IN INCHES TOLERANCES: ANGULAR: ±0.5° X.X = ± 0.1 X.XX = ± 0.05 X.XXX = ± 0.015 REMOVE ALL SHARP EDGES AND BURRS BLEND ALL RADII TO 0.01IN INTERPRET GEOMETRIC TOLERANCING PER: ANSI Y 14.5 1994 MATERIAL: PP, N FINISH: NA THIRD ANGLE PROJECTION:

NAME	JRM	DATE	05/31/11
CHECKED	KDJ	05/31/11	
ENG APPR.		XX/XX/XX	
MFG APPR.		XX/XX/XX	
Q.A.		XX/XX/XX	
COMMENTS:			

Thogus You think it, we can make it...
 33490 PIN OAK, AVON LAKE, OH 44012

TITLE:
3/4" NPT MALE X 1/2" NPT FEMALE REDUCER BUSHING

SIZE	DWG. NO.	REV
B	TRB3412	C

DO NOT SCALE DRAWING SCALE: 2:1 MASS: SHEET 1 OF 1

8 7 6 5 4 3 2 1